

MOBILE TROMMEL SCREENER MTS1550



Scope of application

Like all machines in the GTS series, the MTS 1550 not picky about sifting out waste and raw materials regards. It is equally suitable for compost, soil, light rubble, wood, biomass, sand and gravel etc.

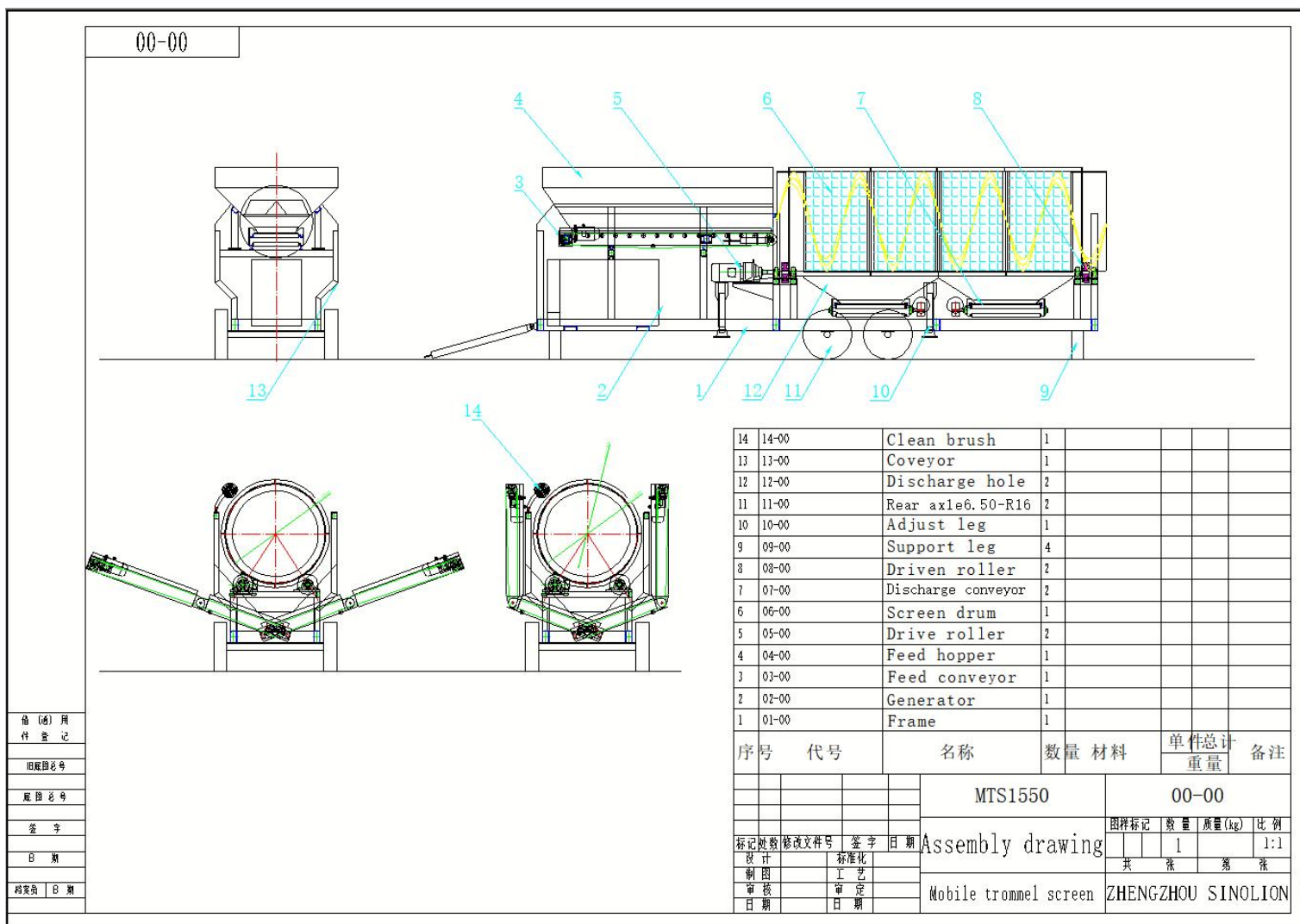
Screening materials: earth, sand, gravel, compost, wood chips, construction waste, recycling material, slag, crushed stone and stone in grain sizes from 2 mm to 80 mm

Advantages

- Quick change system for the sieve insert, optionally drum or star screen insert
 - Large 4.5 m³ feed hopper with a loading height of just 2.6 m
 - 3.2 m long discharge belts with 1.8 m delivery height
 - Electronic load control for a perfect screening result
- optimal throughput
- Perfect mobility thanks to compact transport dimensions



Screening materials: earth, sand, gravel, compost, wood chips, construction waste, recycling material, slag, crushed stone and stone in grain sizes from 2 mm to 80 mm



MTS1550 Specifications

Dimensions

A Operating Length	30' 6" (929.1 cm)
B Operating Height	9' 7" (292.6 cm)
C Travel Length	30' 6" (929.1 cm)
D Travel Height	9' 8" (294.4 cm)
E Travel Width	8' 1" (246.7 cm)
F Trommel Length	16' 5" (500 cm)
G Hopper Length	9' 10" (300 cm)
H Fines Conveyor Height	5' 11" (180.5 cm)

Weight

Machine Weight Approx:7900kg

Power train

Horsepower	67hp (50 kW)
Fuel Tank Capacity	19.79USAgal (90 L)

Feed System

Hopper Capacity	5.88 yd³ (4.5 m3)
Hopper Width	6' 2" (187 cm)

Trommel

Trommel Diameter	4' 11" (150 cm)
Screening Area	202.8ft2 (18.84 m2)
1 # Fines Conveyor	
Conveyor Length	10' 8" (324 cm)
Conveyor Width	3' 10" (117.5 cm)
Conveyor Angle	23 degrees
2. # Fines Conveyor	
Conveyor Length	10' 8" (324 cm)
Conveyor Width	3' 10" (117.5 cm)
Conveyor Angle	23 degrees
Screen (Standard)	
Screen size	20*20mm
Screen thickness	4mm

Production

Screening Performance	118 yd³ (90 m³) per hour
Actual output may vary due to moisture content, material density, material size, and support equipment)	
Specifications subject to change without notice	





